

kēylitos

AIR PURIFIER

INSTRUCTIONS

Model: KJ70F-117



READ AND SAVE THESE INSTRUCTIONS
PICTURE FOR REFERENCE ONLY

ACTIVATE YOUR 5 YEARS WARRANTY PLEASE VISIT NOW

<https://keylitos.com/warranty>

(Register within 2 weeks after receiving your air purifier)

CUSTOMER SERVICE



support@keylitos.com



@Keylitos



+86 19947544726

WhatsApp

Please Download User Manual on Below Link:

<https://keylitos.com/downloads>

■ CATALOG

SAFETY INFORMATION	01
PRODUCT SPECIFICATIONS	03
PRODUCT CLEANING SYSTEM	05
GETTING STARTED	06
OPERATION INSTRUCTION	08
FILTER CLEANING/REPLACEMENT	09
TROUBLESHOOTING GUIDANCE	11
WARRANTY AND SERVICE	12

WARNINGS

This product should be used only in accordance with the specifications outlined in this manual. Usage other than what has been specified here may result in serious injury.

When using electrical appliances, basic precautions should always be followed to reduce the risk of fire, electric shock and injury to persons, including the following:

- Read all instructions before using the product.
- To avoid fire or shock hazard, plug the appliance directly into a correct electrical outlet.
- To avoid fire or shock hazard, DO NOT pull, bend, distort and damage the power cord.
- DO NOT use the product if the power cord/ power plug/ power outlet is damaged.
- To protect against electrical hazards, DO NOT immerse in water or other liquids. Do not use the product near water.
- Children cannot recognize the danger associated with the usage of electrical appliances. For this reason, always supervise children when they are near the unit.
- DO NOT touch the power cord with wet hands.
- Always unplug the air purifier before moving it, opening the grill, changing filters, cleaning or whenever the air purifier is not in use. To disconnect the cord, pull the cord by grasping the plug. Never pull the cord itself.
- NEVER drop or insert any object into any openings.
- DO NOT cover cord with throw rugs, runners, or similar coverings.
- DO NOT use outdoors.
- DO NOT place anything on top of the unit.
- NEVER block the air openings, grills/outlets or place on a soft surface such as a bed or sofa, as this could cause the unit to tip over, blocking the air intake or outtake opening.
- DO NOT use gasoline, benzene, thinner, harsh cleaners, etc, on and/or in the unit while cleaning as they will damage the product. NEVER use alcohol or other solvents.
- WARNING - TO REDUCE THE RISK OF FIRE OR ELECTRIC SHOCK, DO NOT USE THIS FAN WITH ANY SOLID-STATE SPEED CONTROL DEVICE.

FOR USAGE

- DO NOT use the machine without filter in.

- DO NOT place the machine near heat sources such as heater, radiators, stoves and so on.
- To ensure the effect of purification, keep the air purifier around with a certain area to let the wind go in and out. Do not clean and reuse the composite filter; Please be careful when cleaning the machine.
- Only soft cloth can be used to clean the surface of the machine, otherwise, the machine may be damaged or broken, and may cause sensor failure.
- It is forbidden to wipe with alcohol or organic solvent, otherwise, it will damage the product or cause electric shock, fire, etc.
- When cleaning the machine or not using this machine, please disconnect the device power supply and wipe the dust or other matter of the power plug. Otherwise, it may cause electric shock or fire caused by short circuit.
- This appliance has a polarized plug(one blade is wider than the other). To reduce risk of electric shock, this plug is intended to fit in a polarized outlet only one way. If the plug does not fit fully in the outlet, reverse the plug. If it still doesn't fit, please contact a qualified electrician. Do not attempt to defeat this safety feature.

FOR USAGE

- Please install the equipment in a dry environment.
- Do not install the equipment in a flammable environment.
- Please take out the polybag outside before installing the machine.

Warm Reminder

- This machine is not suitable for people with disabilities, perceptual impairment, mental retardation or children.
- It is prohibited to sit, lean on or climb onto the equipment to prevent the machine from being unstable and causing injury.
- When moving, be sure to stop running and pull out the power plug.
- DO NOT attempt to repair or adjust any electrical or mechanical functions on this unit.
- Doing so will void your warranty. The inside of the unit contains no user serviceable parts. All servicing should be performed by qualified personnel only.
- If the equipment produces odors /noise at the running time, please stop using the equipment and clean or replace the filter.

■ PRODUCT SPECIFICATIONS

03

Packing Includes



Air purifier main machine
(The filter is placed inside)



1 piece combination filter



User manual

Product Structure



○ Rotate Speed switch

○ Decoration

○ Front panel

○ Removable base

The left outlet ○

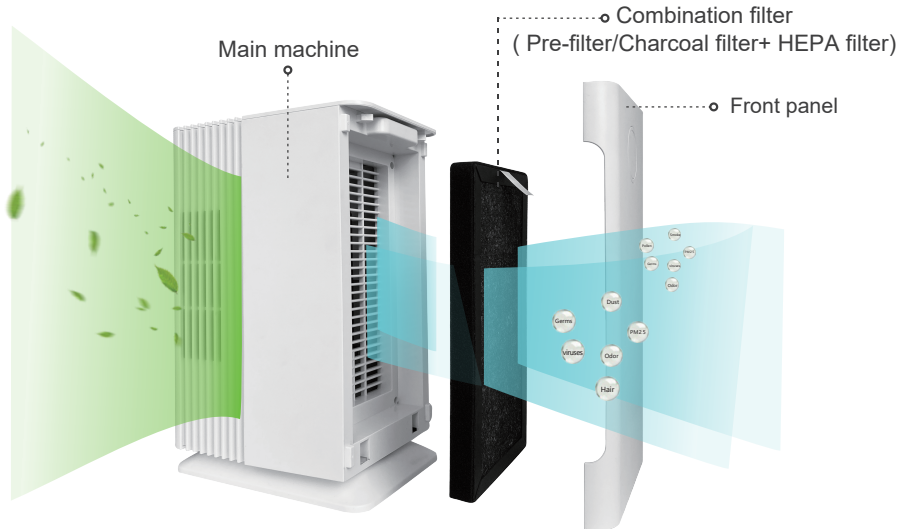
Air Inlet ○

■ PRODUCT SPECIFICATIONS

04

Specifications

Item:	Air Purifier
Model:	KJ70F-117
Voltage:	110V-60Hz
Wattage:	35W
CADR:	120m ³ / h
Product Size:	6.3*8.7*13.8inch
Material:	ABS
Speed:	1/2/3
Filter:	1pc composite filter (pre + activated carbon, HEPA)
HEPA filter:	H13
Removal rate:	99.9%
Noise(max):	≤54 dB (A)
Coverage area:	150ft ² / 14m ²



Combination filter (Pre-filter/Charcoal filter+ HEPA filter)

Capture the initial dust and allergen particles. It can effectively filter pollutants such as smoke, dust and bacteria.

■ GETTING STARTED

1. Open the front panel of the device.

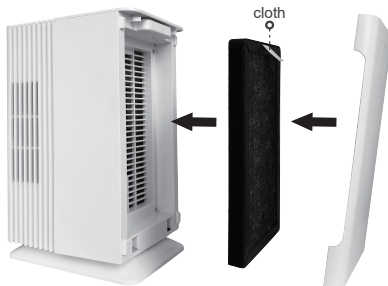
Gently hold both sides of the front panel with both hands, and open the device outwards.



2. Take out the combination filter from its plastic packaging.



3. Install combination filter back(the one with cloth strip facing out).



4. Align the matching slots and install the front panel.



OPERATION INSTRUCTION

Rotary Switches Speed Level

1. Turn on the switch by clockwise, speed is 1-2-3 respectively. (Fig. 1)
2. Turn on the switch by counterclockwise, then return to OFF button. (The machine stops running on "OFF") (Fig. 2)

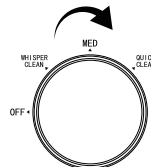


Fig. 1

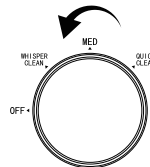


Fig. 2

The device Placement instructions

This device can be applied to various scenes in two different ways.

1. **Standing type**: Suitable scenarios: Table, living room, bedroom.

2. **Lying type**: All of the above places are applicable.

(1) When place the unit lying down, please place the left side of the unit up on the table and make sure that the air inlet and outlet are without any blocks.



(2) The machine base is detachable. When you don't want to use, you can take it off and save it for next use.



Note: Push the base along the arrow direction to assemble/ disassemble



Removable machine base



Important notes:

- Please use the accessories provided in the box.
- DO NOT leak any liquid into the machine. If any liquid enters into the machine, do not operate the machine. Please disconnect device's power supply and contact after-sales for help.

FILTER CLEANING

Please check your device manual first before attempting to clean the purifier, proceed as follows:

1. Wear a protective face mask and gloves. If you suffer from severe allergies, or if your filter is capturing any strong pollutants, protect yourself during the cleaning process.
2. Unplug the unit, remove the filter element.
3. First use a dry brush or cloth to clean the dust on the surface, and use a vacuum cleaner or the cold air outlet of the hairdryer to blow the filter element.

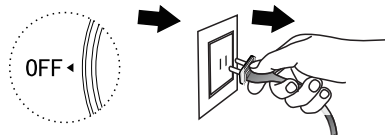
Note: This filter element cannot be washed, nor can it be wiped with a wet cloth.

FILTER REPLACEMENT

1. Turn off the device.

Attention

After ensuring that the knob position switch is in the OFF position, the power plug must be unplugged and then cut off the main unit power.



2. Open the front panel of the device.

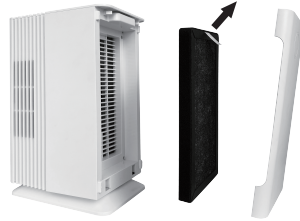


■ FILTER CLEANING/REPLACEMENT

3. Take out the combination filter and wrap the used filter with a garbage bag to avoid the pollutants on the filter from falling on the floor.

Attention

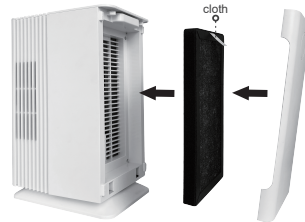
- a. Please read the replacement filter operating instructions carefully to ensure the purification effect of the purifier.
- b. The filter that reaches its service time can not be used again even it is clean.



4. Install the panel well after replace a new filter (the one with cloth strip facing out) inside, then turn on the unit to work.

Attention

The filter service time may differ from the different using environment. It is normally suggested to replace the filter every 3-6 months.



■ TROUBLESHOOTING GUIDANCE

If malfunction occurs in the air purifier, please check as phenomenon showed before repair

Phenomenon	Possible reason	Solution
Machine can not start	A. Unplug power plug. B. Machine front panel not in position.	A . Reconnect power plug. B. Re-install the front panel in position according to the instructions.
Odor in the outlet	A. More pollutants indoor such as more smoking. B. Filter is polluted severely.	A. It is recommended that the room be ventilated. B. Replace with the new filter.
None obvious dust removal effect,none air quality improvement	A. Filter is not installed into the machine. B. Machine is placed in narrow space or space with obstacles nearby which may have negative impact on the purification effect. C. Filter is too dirty.	A. Install the filter correctly. B. Place the unit at least a foot away from the obstacles. C. Replace for new combination filter.
Running noise loud	A. Whether the installation is not tight. B. Other matter stored in the machine.	A.Contact after-sales support@keylitos.com. B.Use a brush to remove the dust, and then use vacuum cleaner or the cold air outlet of hairdryert to blow the filter.
Filter cannot be installed	Filter is installed opposite.	Adjust the filter to right direction and install the filter to the bottom slot(the one with cloth strip facing out).



After all the checks above, troubleshooting still existed, please contact our service center or contact technical service center. Do not attempt to disassemble and maintain the maintenance by yourself, to avoid any danger and damages to the machine.

LIMITED FIVE-YEAR WARRANTY

Register your warranty to receive premium benefits! By registering your product, you will receive 5 years warranty, expedited customer support, hassle-free returns and helpful product tips. You will also get first access to new products and giveaways, in just a few simple steps!

ACTIVATE YOUR 5 YEARS WARRANTY NOW

—<https://keylitos.com/warranty>

Or SCAN ME



(Register within 2 weeks after receiving your air purifier)

If your air purifier should prove to be defective, contact us, we'll offer replacement or refund.

To obtain warranty service, simply contact an authorized service representative:



support@keylitos.com



@Keylitos



+86 19947544726

WhatsApp

FCC COMPLIANCE

This device complies with Part 15 of the FCC Rules. Operation is subject to the following two conditions:

(1) This device may not cause harmful interference, and (2) This device must accept any interference received, including interference that may cause undesired operation.

MADE IN CHINA